



Slow in, fast out (with AI).

Enterprise AI for
Business?
Does it Matter?

Leaders say Yes.

49%

of CEO respondents have a workforce
productivity plan that includes GenAI

Gartner



Gartner

Estimating and Demonstrating
Business Value is the No. 1 AI
Adoption Barrier.

Gartner Research

What **specific business or mission challenge** are you looking to solve with GenAI?

The Nutanix Enterprise AI Approach

1. Identify a specific business challenge.
2. Quantify the business value of overcoming the challenge.
3. Design and implement an enterprise AI solution to solve the business challenge.
4. Deliver delightful day 2 operations of this new business critical AI application.

Investment Performance Example

\$11.75M

Net Present Value
Comprehensive measure
of investment payback

+\$22M

Free Cash Flow

+37%

Total Factor
Productivity

Fraud Detection Agent AI

Determine if transactions are legitimate or fraudulent and send actionable reports to business stakeholders.

Models in Use:

- Fraudulent Transaction Detection predictive model
- Llama 3.1 8B generative model

Lessons Learned

Engage the target end user community earlier in the project. Receiving the end user insight earlier in the project would have allowed us to launch even further ahead of schedule.

Architecture Overview

Private cloud deployment using Nutanix GPT-in-a-Box reference architecture and models trained using Data Robot.

Success for leadership requires being able to answers **these key questions:**

What AI models
are we using?

What is the level of
GenAI adoption
across our
business?

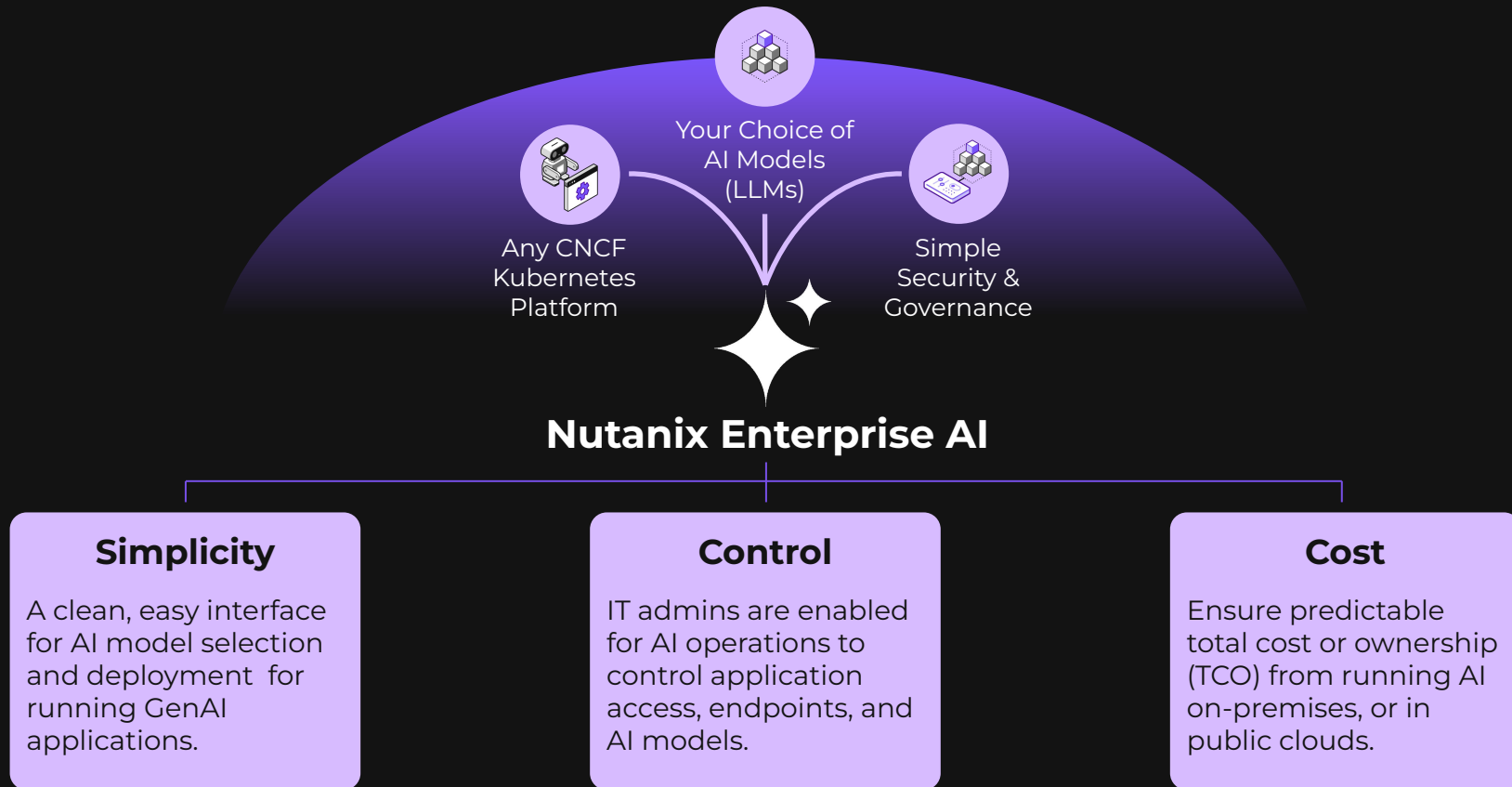
How do we scale our
infrastructure and operations
to meet GenAI demand?



Say Hello to
Nutanix Enterprise AI



Nutanix Enterprise AI Delivers Key Benefits



How Nutanix Enterprise AI fits

AI and
Modern Apps



Core
Infrastructure



Deploy GenAI Apps

Build GenAI Apps

Nutanix Enterprise AI

Enterprise Model Repository | Choice of LLMs | Secure Endpoints

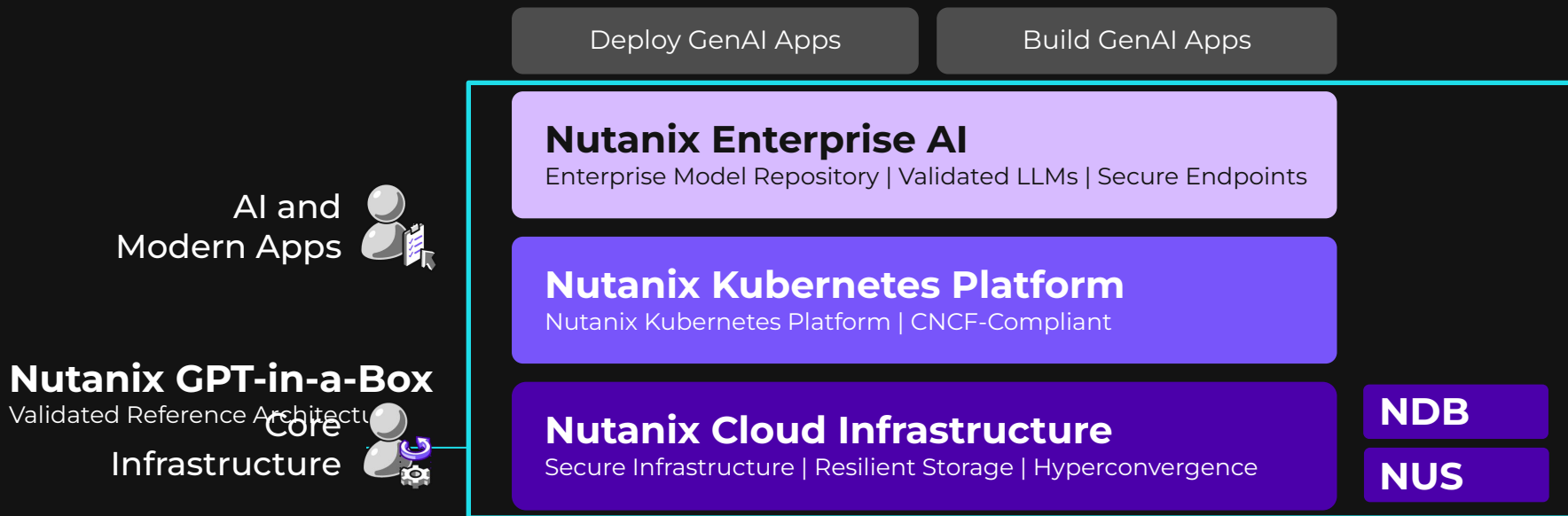
Any Kubernetes

Nutanix Kubernetes Platform | Open Shift | Public Clouds

Nutanix Cloud Infrastructure

Secure Infrastructure | Resilient Storage | Hyperconvergence

Our GPT-in-a-Box Reference Architecture



Nutanix Enterprise AI, Anywhere

Deploy GenAI Apps

Build GenAI Apps

Nutanix Enterprise AI

Enterprise Model Repository | Choice of LLMs | Secure Endpoints

Any Kubernetes

Nutanix Kubernetes Platform | OpenShift | Public Clouds

Nutanix Cloud Infrastructure

Secure Infrastructure | Resilient Storage | Hyperconvergence

Nutanix Enterprise AI, Anywhere

Nutanix Enterprise AI

Enterprise Model Repository | Choice of LLMs | Secure Endpoints

Any Kubernetes

Nutanix Kubernetes Platform | OpenShift | Public Clouds

Nutanix Cloud Infrastructure

Baremetal

Public Cloud

Inferencing

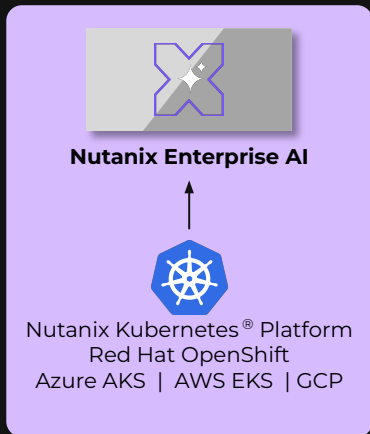
Fine Tuning

Training



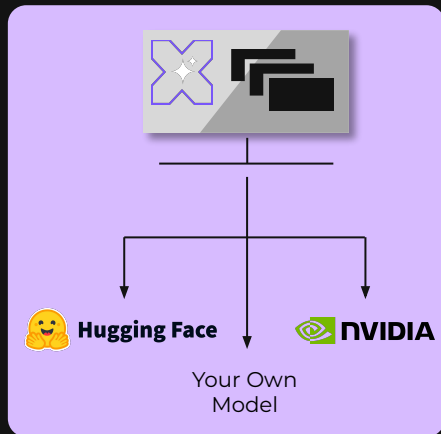
How does Nutanix Enterprise AI work?

1.



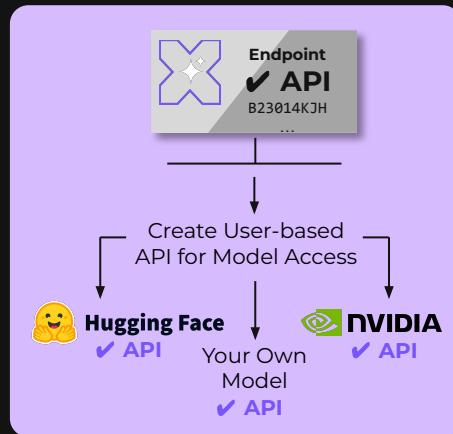
**Deploy and run
Nutanix Enterprise AI
on any Kubernetes®.**

2.



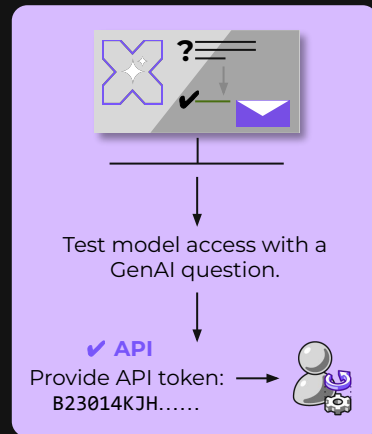
**Login to the interface
and simply pick and
deploy your LLM.**

3.



**Create a secure endpoint
to use and test the
model access.**

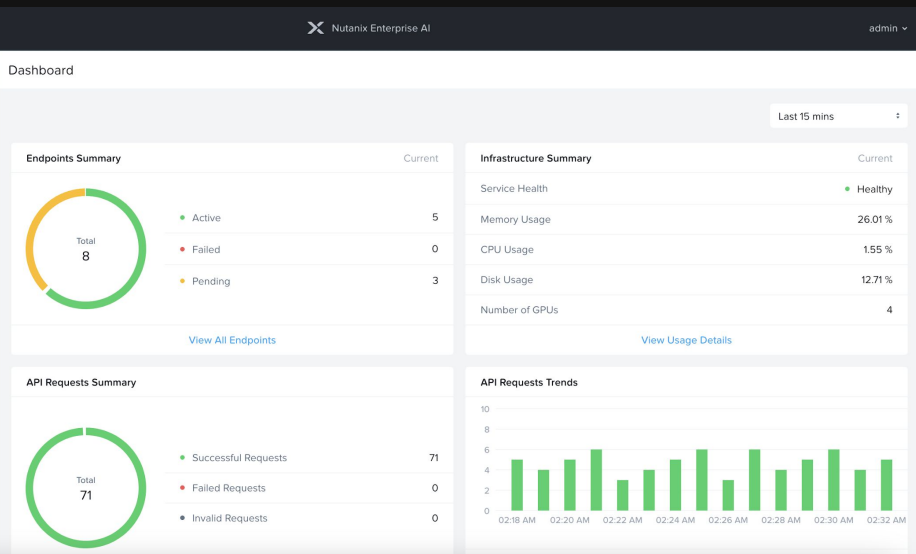
4.



**Send the credentials to a
developer or application
owner.**

**Audit and Monitor APIs, Endpoints,
LLMs, and Infrastructure**

IT Admins to AI Admins



Nutanix Enterprise AI

admin

Models

[Import Models](#) [Actions](#)

Viewing 16 Models

Model Instance Name	Model	Developer	Import Mode	Type	Imported By	Status
<input type="checkbox"/> llama3.188l	meta-llama/Meta-Llama-3.1-8B-Instruct	Meta	Hugging Face	Text Generation	Kelly Oliver	Active
<input type="checkbox"/> surbhi-test	google/gemma-2-2b-it	Google	Hugging Face	Text Generation	admin	Active
<input type="checkbox"/> llama-3.1	meta-llama/Meta-Llama-3.1-8B-Instruct	Meta	Hugging Face	Text Generation	admin	Active
<input type="checkbox"/> gemma-ga	google/gemma-2-2b-it	Google	Hugging Face	Text Generation	admin	Active
<input type="checkbox"/> nim-llama3	llama-3.1-8b-instruct	Nvidia	NVIDIA NIM	Text Generation	admin	Active
<input type="checkbox"/> mistral	mistralai/Mistral-7B-Instruct-v0.3	Mistral	Hugging Face	Text Generation	admin	Active
<input type="checkbox"/> mistral-marketing-team	mistralai/Mistral-7B-Instruct-v0.3	Mistral	Hugging Face	Text Generation	admin	Active
<input type="checkbox"/> maryland_nug	meta-llama/Llama-2-13b-chat-hf	Meta	Hugging Face	Text Generation	admin	Active
<input type="checkbox"/> aj-test-2	google/gemma-2-2b-it	Google	Hugging Face	Text Generation	admin	Active
<input type="checkbox"/> llama-3.1-8b-instruct	llama-3.1-8b-instruct	Nvidia	NVIDIA NIM	Text Generation	admin	Active

Nutanix Enterprise AI

admin

Endpoints

[Create Endpoint](#) [Actions](#)

Viewing 8 Endpoints

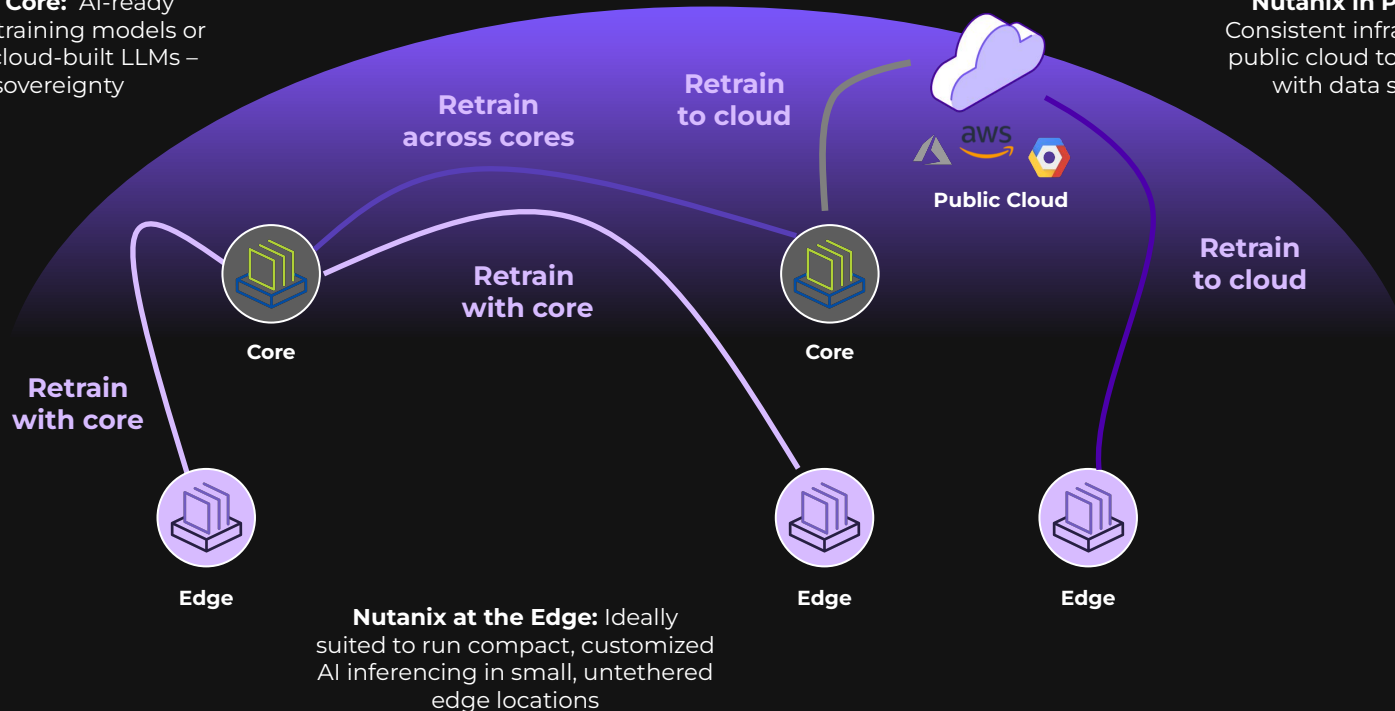
Endpoint Name	Model	Number of Instances	Number of GPUs	Created By	Status	Endpoint Access
<input type="checkbox"/> gemma-2-2b-cpu	gemma-ga	1	0	admin	Active	View Sample Request
<input type="checkbox"/> kellyendpoint	llama3.188l	1	1	Kelly Oliver	Pending	View Sample Request
<input type="checkbox"/> surbhi-endpoint-test	llama-3.1	1	1	admin	Pending	View Sample Request
<input type="checkbox"/> gemma-ga-test	gemma-ga	1	1	admin	Pending	View Sample Request
<input type="checkbox"/> harshil-endpoint	HF-Meta-Llama-3.1-8B-Instruct	1	1	admin	Active	View Sample Request
<input type="checkbox"/> vlm-llama-3.1	HF-Meta-Llama-3.1-8B-Instruct	1	1	admin	Active	View Sample Request
<input type="checkbox"/> tgi-llama-3.1	HF-Meta-Llama-3.1-8B-Instruct	1	1	admin	Active	View Sample Request
<input type="checkbox"/> nim-llama3.1	NIM-llama-3.1-8b-instruct	1	1	admin	Active	View Sample Request



Accelerating AI: Edge to Multicloud

Nutanix at the Core: AI-ready infrastructure for training models or for customizing cloud-built LLMs – with data sovereignty

Nutanix in Public Cloud: Consistent infrastructure with public cloud to access LLMs – with data sovereignty



Next Steps Together

What does the process look like today?

What business challenge are we going to solve together?



Who do we need to invite to the meeting?

A large, faint, purple watermark of the Nutanix logo is centered in the background. It consists of a square with rounded corners and a large 'X' inside, with a four-pointed star at the center of the 'X'.

Thank you.

NUTANIX™

Ready for more?



QR Code insert
for web page

Walk-through of
Nutanix
Enterprise AI

QR Code insert
test drive

Test Drive
Nutanix
Enterprise AI

A large, faint, purple watermark of the Nutanix logo is centered in the background. It consists of a square with rounded corners and a large 'X' inside, with a four-pointed star at the center of the 'X'.

Thank you.

NUTANIX™